



F INSTRUCTIONS D'UTILISATION



Instructions d'utilisation à lire très attentivement avant mise en marche, et à conserver pour utilisations ultérieures.

D BEDIENUNGSANLEITUNG



Bedienungsanleitung vor Inbetriebnahme aufmerksam lesen und zur weiteren Verfügung aufbewahren.

CZ NÁVOD K OBSLUZE



Před uvedením přístroje do provozu si pozorně přečtěte návod k použití a uschovejte jej pro další potřebu.

PL INSTRUKCJA OBSŁUGI



Przed uruchomieniem urządzenia należy dokładnie przeczytać instrukcję obsługi oraz zachować ją dla późniejszego użytkowania.

E INSTRUCCIONES DE FUNCIONAMIENTO



Por favor, leer detenidamente las instrucciones antes del uso y guardarlas para referencia adicional.

NL GEBRUIKSAANWIJZING



Gebruiksaanwijzing voor ingebruikname, zorgvuldig lezen en als naslag bewaren.

GB OPERATING INSTRUCTIONS



Please read operating instructions carefully before use and keep it for further reference.



F INSTRUCTIONS D'UTILISATION



Instructions d'utilisation à lire très attentivement avant mise en marche, et à conserver pour utilisations ultérieures.

D BEDIENUNGSANLEITUNG



Bedienungsanleitung vor Inbetriebnahme aufmerksam lesen und zur weiteren Verfügung aufbewahren.

CZ NÁVOD K OBSLUZE



Před uvedením přístroje do provozu si pozorně přečtěte návod k použití a uschovejte jej pro další potřebu.

PL INSTRUKCJA OBSŁUGI



Przed uruchomieniem urządzenia należy dokładnie przeczytać instrukcję obsługi oraz zachować ją dla późniejszego użytkowania.

E INSTRUCCIONES DE FUNCIONAMIENTO



Por favor, leer detenidamente las instrucciones antes del uso y guardarlas para referencia adicional.

NL GEBRUIKSAANWIJZING



Gebruiksaanwijzing voor ingebruikname, zorgvuldig lezen en als naslag bewaren.

GB OPERATING INSTRUCTIONS



Please read operating instructions carefully before use and keep it for further reference.



WARNING



Danger! Unplug the tool before opening it, as live components and connections are exposed.



Incorrect use of hot air tools can present a **fire and explosion hazard**, particularly in the proximity of flammable materials and explosive gases.



Danger of getting burned! Do not touch the heater tube and nozzle when they are hot. Let the tool cool down. Do not point the hot air flow in the direction of people or animals.



Only connect the tool to a **receptacle outlet with protective earth conductor**. Any disconnection of the protective earth conductor, in or outside the tool is dangerous!
Only use extension lead with a protective earth conductor.



CAUTION



The **rated voltage** stated on the tool must correspond with the mains voltage.



For personal protection, we strongly recommend the tool to be connected to an **RCCB** (Residual Current Circuit Breaker) before using it on construction sites.



The tool must be operated **under supervision**.
– Heat can ignite flammable materials which are not in view.
– Interference can impair the welding process when taking place in the vicinity of high-frequency installations.



Protect the tool **from damp and wet**.

Approval Marks



TECHNICAL DATA

Protection Class I



CCA certified

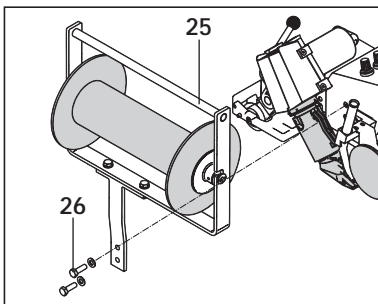
Voltage	V-	230 ★	120	
Frequency	Hz	50 / 60	50 / 60	
Capacity	W	2300	1800	
Temperature	°C	20 – 620	20 - 620	
Air flow	l/min.	Max. 300	Max. 250	
Drive speed	m/min.	1.0 – 7.5	1.0 - 7.5	
Noise emission level	L _{pA} (dB)	67	65	
Dimensions Uniplan S	mm	420×270×210	420×270×210	
Dimensions Unifloor S	mm	420×270×215	420×270×210	
Weight Uniplan S	kg	11.5	11.5	
Weight Unifloor S	kg	14.0	14.0	

★ Mains voltage cannot be switched over

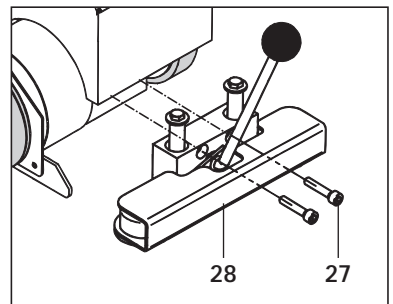
- **Operational condition: Accessories**

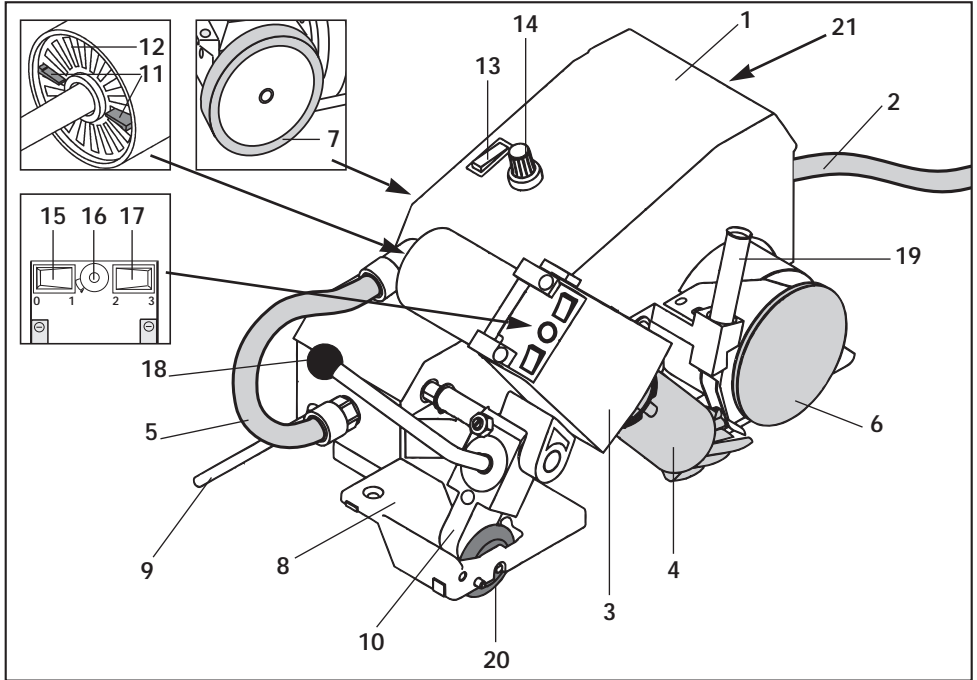
- If the **welding rod de-reeler (25)** and **lifting device (11)** are available:
 - Attach **welding rod de-reeler (25)** to the Unifloor S machine using **cheese head screw M8 × 20 (26)**.
 - Attach **lifting device (11)** using **socket head cap screw M6 × 30 (27)**.

Accessory
Welding rod de-reeler



Accessory
Lifting device





Main components

- 1. Housing
- 2. Mains cable
- 3. Hot air blower
- 4. Welding nozzle with cover
- 5. Connection hose
- 6. Welding rod pressure roller
- 7. Drive roller
- 8. Chassis
- 9. Wall switch-off
- 10. Support bracket
- 11. Manual air valve
- 12. Air filter

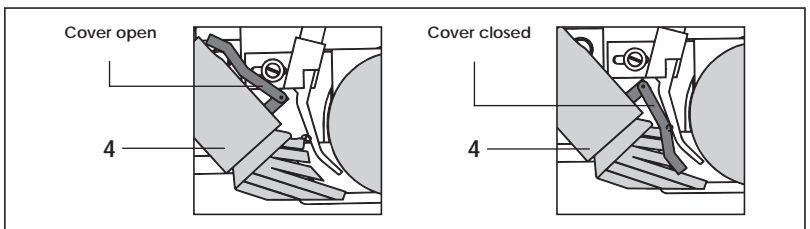
Operating components

- 13. Drive switch
- 14. Potentiometer for welding speed
- 15. Air blower switch
- 16. Potentiometer for air temperature
- 17. Two stage switch for airflow
- 18. Swivel lever

Steering equipment

- 19. Welding rod guide tube
- 20. Guide roller
- 21. Fuse T 1.0 A 230 V~
T 1.2 A 120 V~

Detail A



Operating condition

- Check the nozzle setting: the nozzle must maintain a distance from the base material and the welding rod of about 2-3 mm.
- When welding linoleum, lower the **cover** on to the **welding nozzle (4)** (see Detail A:Page 6).
- Connect the tool to the mains.

Tool positioning

- Swivel **hot air blower (3)** up to the stop using **swivel lever (19)**.
- Position the automatic welding machine over the joint to be welded.
- Insert the welding rod through the **welding rod guide tube (19)**, pull it under the **welding rod pressure roller (6)** and place it in the joint.
- The **Guide roller (20)** must run in the welding joint.

Welding parameters

- Set **potentiometer for welding speed (14)** to the required value.
- Set **potentiometer for air temperature (16)** to the required value.
- Turn on the **air blower switch (15)**, set the **two stage switch for airflow (17)** at setting 3 and heat up for about 5 minutes.
- **Important: low voltage.**
If the maximum temperature is not reached, reduce the airflow by means of the **manual air valve (11)** and the **two stage switch for air flow (17)**.
- The contact pressure is effected through the weight of the automatic hot air welding machine itself.

Welding procedure

- Swivel **hot air blower (3)** up to the stop using **swivel lever (18)** and at the same time turn on the **drive switch (13)** (The welding process starts).
- Supervise the welding process: – **Guide roller (20)** must run in the joint.
– The welding bead must be visible. If necessary adjust the welding parameters using the **potentiometer (14)**.
- **Wall switch-off (9)**
When contact is made with the wall, the drive and heater are switched off automatically.
- When welding is finished, swing up the **hot air blower (3)** to the stop by means of **swivel lever (18)**.
- Switch off the drive **switch (13)**. Cut off the welding rod. Re-position the automatic welding machine as necessary.
- After completing work, set **potentiometer for air temperature (16)** to zero so that **hot air blower (3)** cools down. Then turn off the **air blower switch (15)**.
- Disconnect the tool from the mains.

ACCESSORIES

- Only LEISTER accessories should be used.
- Additional weight with holder for Uniplan S
- Welding rod de-reeler for Unifloor S
- Lifting device for Unifloor S

MAINTENANCE

- Clean the tool's **air filter (12)** with a brush when dirty.
- Clean **welding nozzle (4)** with wire brush.
- Check **mains cable (2)** and plug for electrical and mechanical damage.

SERVICE AND REPAIR

- Have your Service Centre check the motor brushes after about 1,000 hours of operation.
- Repairs have to be carried out by authorised ROMUS **Service Centres** only.

GUARANTEE AND LIABILITY

- Guarantee and liability are in accordance with the guarantee certificate as well as with the currently valid general business and sales conditions.
- LEISTER and ROMUS rejects any guarantee claims for tools which are not in their original condition. The tools must never be altered or changed.

Technical data and specifications are subject to change without prior notice.

Your authorized Service Centre is:



GUARANTEE :

1 year guarantee (apart from spare element and nozzles).